

# Harcourt 22

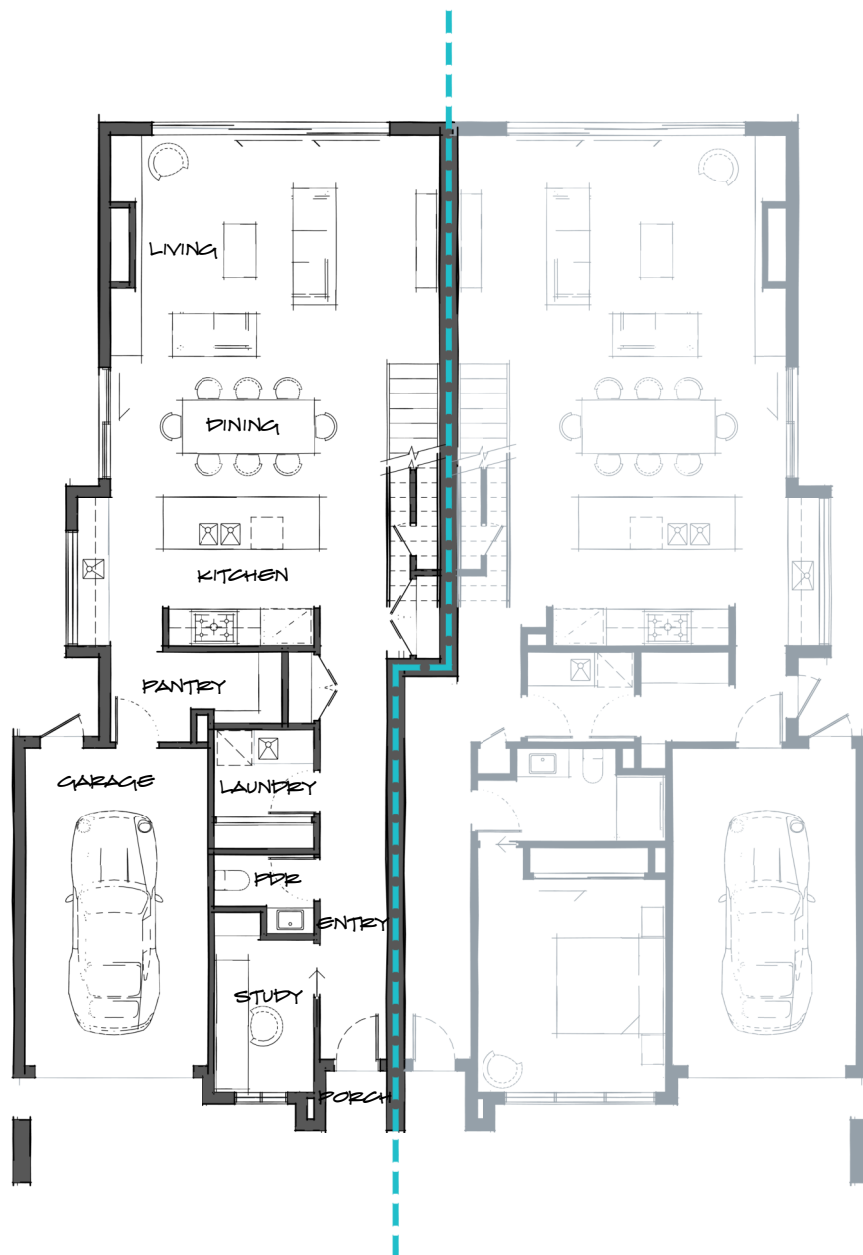
22 squares



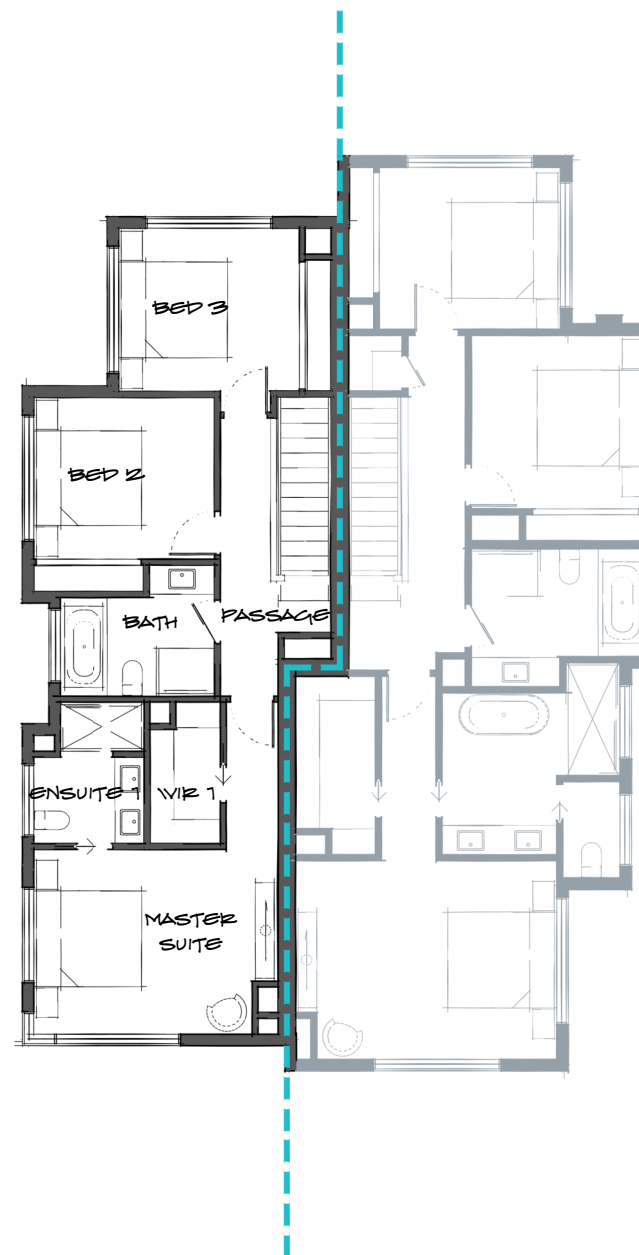
## dimensions (m)

entry	7.57 x 1.26
porch	1.13 x 1.15
garage	6.02 x 3.48
laundry	1.67 x 1.89
kitchen	2.81 x 4.59
dining	2.67 x 5.23
living	4.18 x 6.23
pdr	1.50 x 1.89
master suite	3.49 x 4.63
wir 1	2.69 x 1.33
ensuite 1	2.69 x 2.10
bed 2	3.07 x 3.43
bed 3	3.07 x 3.41
bath	1.86 x 2.93

exterior length	20.06 m
exterior width	7.23 m
house area total	207m <sup>2</sup>
house squares	22.33sq



Ground Floor



First Floor

**cartergrange**

Refer to working drawings for full dimensions.  
 © Copyright Carter Grange Homes 2020  
 Carter Grange Homes Pty. Ltd. Builders Registration #CDB-U 49634