

Suett 55

(as displayed at 16 Southey Street, Sandringham)

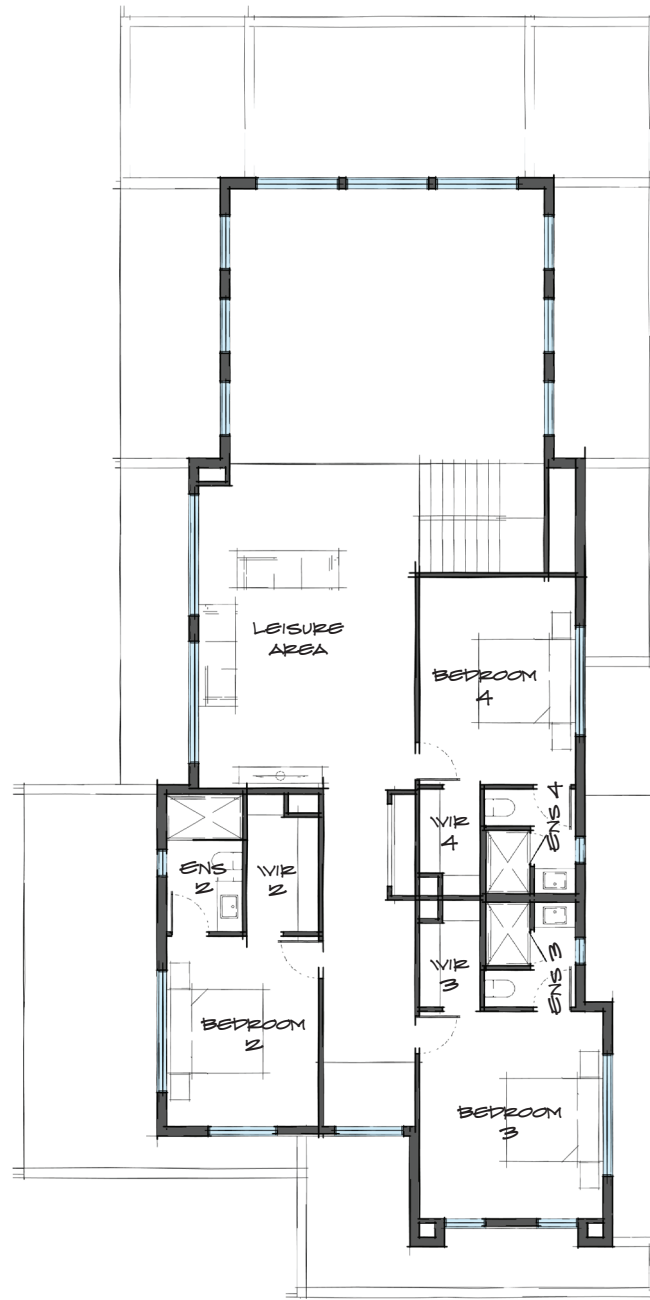


dimensions (m)

porch	2.6 x 2.33
master suite	4.5 x 5
WIR	2.3 x 4.4
ensuite	2.92 x 4.97
powder room	1.66 x 1.55
laundry	3.02 x 3.4
butlers pantry	4.03 x 2.19
kitchen	5.97 x 3.2
outdoor living	3.5 x 11.69
dining	5.97 x 3.89
family	6.97 x 4.19
library/study	6 x 4.1
coat	1.4 x 2.79
store	2 x 2.9
garage	6 x 6.2
bedroom 3	4.5 x 4
ensuite 3	2.29 x 1.99
WIR 3	2.33 x 1.32
ensuite 4	2.29 x 1.99
WIR 4	4.51 x 3.4
bedroom 4	4.51 x 3.4
leisure area	7.06 x 4.7
ensuite 2	3 x 1.65
WIR 2	3 x 1.56
bedroom 2	4.13 x 3.3
exterior length	27.82
exterior width	13.79
house area total	513.66 m ²
house squares	55.29 sq
min. block size	15.79 x 39.82



Ground Floor



First Floor

cartergrange

Refer to working drawings for full dimensions.
 © Copyright Carter Grange Homes 2019
 Carter Grange Homes Pty. Ltd. Builders Registration# CDB-U 49634